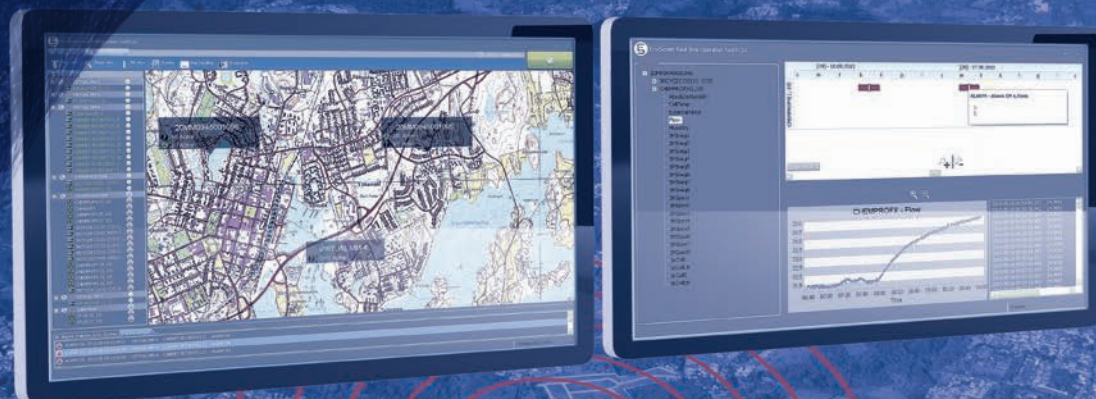


# ChemProFXi

Fixed Chemical Detector



- Industry leading sensitivity & false alarm rejection
- Robust design - indoor & outdoor applications
- Simple maintenance – low lifecycle costs

# ChemProFXi

## Fixed Chemical Detector



The ChemProFXi is a permanently mounted gas and vapor detector that provides continuous 24 hour 7 day a week protection of fixed infrastructure from the threat of Chemical Warfare Agents (CWAs) & selected Toxic Industrial Chemicals (TICs). It has industry-leading sensitivity and false alarm rejection in the most user friendly and low-maintenance package in its class.

### KEY FEATURES

- Industry leading sensitivity & false alarm rejection
- Robust design - indoor & outdoor applications
- Simple maintenance – low lifecycle costs
- Continuous use 24/7/365
- Environics EnviScreen compatible
- Easy integration to 3rd party systems
- Extensive and customizable TIC detection

### APPLICATIONS

- Fixed and mobile detection systems
- Shipboard applications
- Critical Infrastructure Protection
- Subway security systems
- VIP protection solutions
- Area monitoring systems
- Industrial chemical vapor monitoring



## Multi-threat Capability

Effective critical infrastructure protection calls for innovative and sophisticated solutions. The security systems must have the capability coping with multi-threat scenarios. The ChemProFXi has been designed to handle these demanding requirements. It can be used in a wide range of applications ranging from buildings, area-monitoring solutions to shipboard installations.

## A Truly Orthogonal Detector

The ChemProFXi draws in an air sample using a continuous pump and then uses an array of detection technologies to detect, classify and measure gases and vapors. A truly orthogonal detector that uses an array of sensing technologies, the heart of the ChemProFXi remains Environics' proven and unique open-loop Ion Mobility Spectroscopy (IMS) sensor.

## Lowest Life-Cycle Costs & Logistics

The ChemProFXi doesn't have to purify or chemically modify the sample with sieves or dopants, unlike traditional closed-loop IMS. Because of this the ChemProFXi has no expendables and is designed for low life cycle and operating costs.

## Predictable Maintenance

The ChemProFXi built-in self-diagnostics technology monitors device status ensuring correct operation of the unit at all times. This feature allows managers to schedule maintenance rather than just responding to failing CWA monitors. In the words of a customer "When I buy a ChemProFXi I know that I won't get calls about it failing."

## Easily Mounted And Interfaced

The small size and innocuous housing of the ChemProFXi allows for easy installation in structures, subways and outdoors. The ChemProFXi supports Ethernet connection and RS485 bus. It also provides relay outputs for "Alarm" and for "Service/Maintenance/Fault" that can be used for triggering local or remote alarms or controlling ventilation systems.

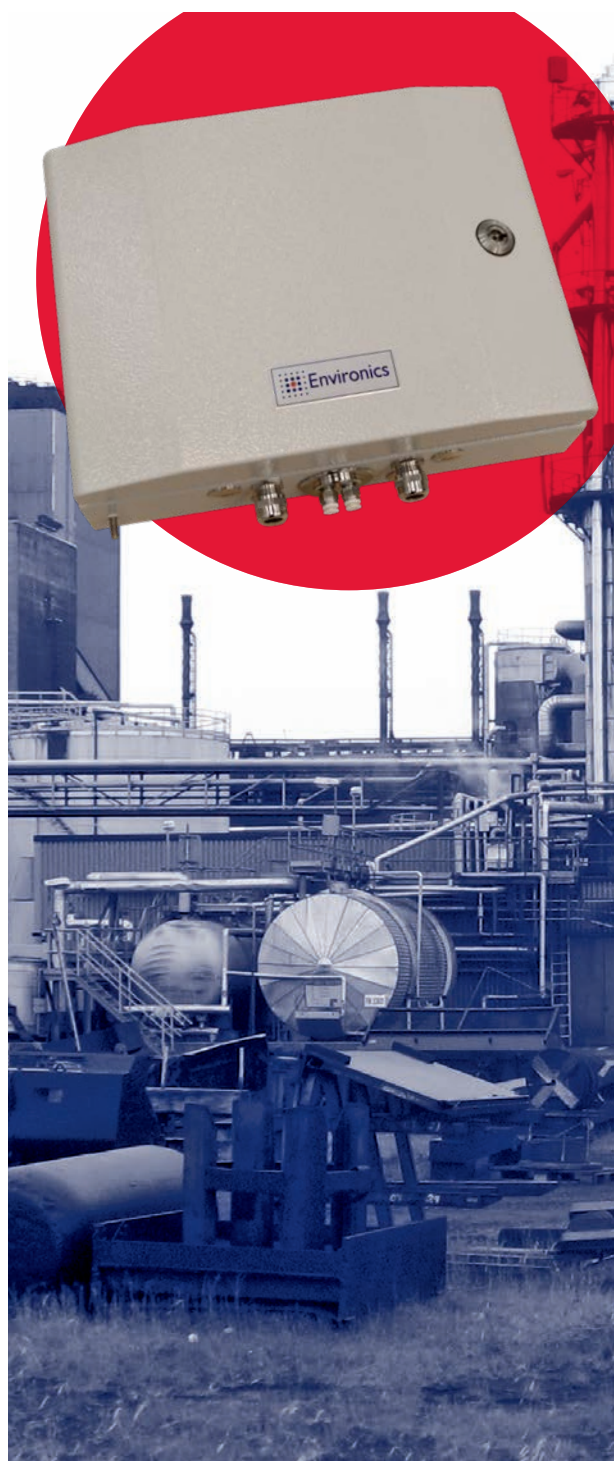
## Flexible Multi Library Operation

The standard ChemProFXi comes loaded with a list of chemicals (called a "library") that includes all CWAs and wide range of TICs. However, custom libraries can be created for various threat scenarios and for industrial applications where 24/7 monitoring of a specific TIC or list of TICs may be required.



## Technical Data

<b>Size</b>	Approx. 270 x 360 x 110 mm (10.7"H x 14.2"W x 4.4"D)
<b>Weight</b>	Approx. 8.3 kg (293 oz.) 7.0kg (247 oz.) w/o back-up battery
<b>Detectors</b>	Orthogonal detection using: <ul style="list-style-type: none"> <li>• Open-loop (aspirated) IMS cell</li> <li>• Temperature, humidity, pressure and mass flow sensors</li> <li>• Multiple semiconductor sensors</li> </ul>
<b>Detection libraries</b>	CWA/TIC library as standard Call for custom industrial chemicals
<b>Power</b>	85-264 VAC (50-60Hz) with battery backup or 10-40VDC
<b>Sampling</b>	Approx. 1,3 LPM with long lifetime built-in pump unit
<b>Calibration</b>	No calibration is required, but a simple confidence check as needed
<b>Data Interfaces</b>	RS485-Bus Current Loop input for external devices Relay output for Alarm Relay output for Service/Maintenance/Fault Ethernet (Optional)
<b>Temperature (Operating)</b>	-30°C to 55°C (-22°F to 131°F)
<b>Temperature (Storage)</b>	-40°C to 71°C (-40°F to 160°F)
<b>Humidity</b>	0-95% non-condensing
<b>Dust &amp; water resistance</b>	IP65: (Totally protected against dust and protected against low pressure water jets)
<b>Accessories</b>	Shock absorbing mounting rack Local alarm unit Local display unit



P.O. Box 349 • FI-50101 • Mikkeli • FINLAND  
**tel** +358 201 430 430 • **fax** +358 201 430 440  
 sales@environics.fi • www.environics.fi

Subscribe to our **Newsletter**  
[www.environics.fi/newsletter](http://www.environics.fi/newsletter)

View our **Solution Portfolio**  
[www.environics.fi/portfolio](http://www.environics.fi/portfolio)

Find us in **Social Media**

