

EnviScreen Operix 2016

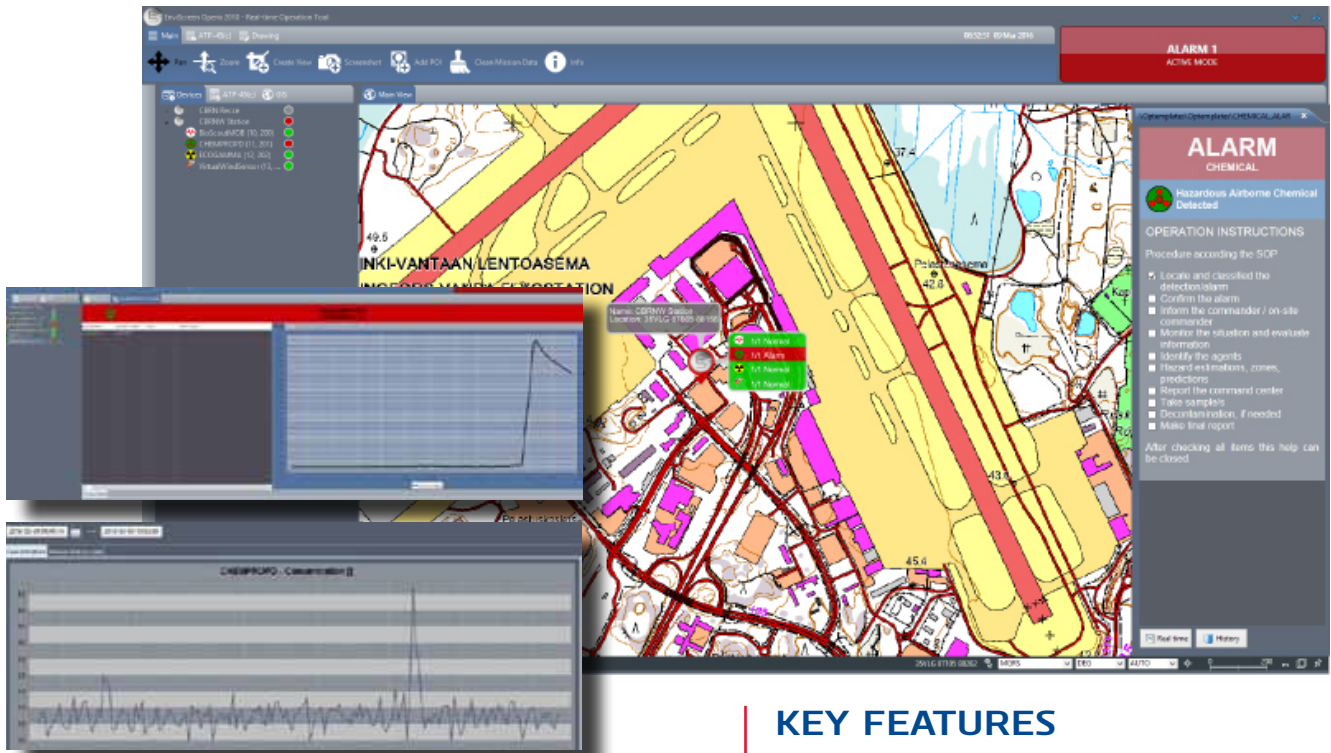
CBRN and Environmental Monitoring
System Software Solution



- Advanced CBRN sensor network- and geographic information system software
- Incorporates sensor integrations, data communications, databases, system services and user interfaces
- Compatible for wide range of CBRN sensors and analyzers

EnviScreen Operix 2016

CBRN and Environmental Monitoring System Software Solution



The EnviScreen Operix 2016 is complete software solution for continuous real-time operative CBRN and Environmental situation awareness and guidance.

EnviScreen Operix 2016 incorporates sensor integrations, data communications, databases, system services and user interfaces. Its technology reaches from single site to full nation-covering monitoring networks. EnviScreen Operix 2016 is the solution when people safety and system reliability are number one issues.

APPLICATIONS

- Critical infrastructure; buildings, subways and shelters
- Naval vessels
- CBRN Vehicles
- Mobile CBRN monitoring

KEY FEATURES

- Selectable application profiles to meet operator requirements in different applications
- Easy to fill instructions templates for automatic operator guidance
- Training & simulation tool for maintain operators competence & situation management skills
- User management with user roles and different levels of access
- NATO ATP-45 reporting and AEP-45 procedures for display of CBRN hazard information (Supports NBC1-, NBC3-, NBC4-, CDR and BWR -reporting)
- Provides secured, reliable and fast communication methods for wired and wireless solutions by utilizing most common encryption methods
- Scalable software – meeting specific customer requirements cost effectively
- Compatible for wide range of CBRN sensors & measurement devices
- Provides hardware-, protocol- and application level integration to 3rd party Command & Control Systems
- Design to meet any plume modeling and analyzing integrations and development
- Design to present plume forecasts and analysis on map interface, using surveillance, sensor data and different plume calculation models.

Interactive User Interface

The EnviScreen Operix 2016 GIS user interface is built in cooperation with usability specialists and behavior scientists to help eliminate human error and offer maximal performance even in high stress situations. It presents clear and illustrative real-time situation overview from data generated by the CBRN sensor networks and guides operator to take appropriate actions based on situation.

Training and Simulations

When unexpected waits to happen, EnviScreen Operix 2016 provides extensive system training and simulation features for maintaining operators competence and situation management skills.

EnviScreen Operix also provides integration platform for plume models to model chemical, biological, radiological and nuclear dispersion forecasts enhancing the preparedness for the time before, during and after CBRN release. The EnviScreen Operix can present clear and illustrative forecast and analysis on map interface, based on GIS information, surveillance user data, sensor data and integrated plume calculation models.

Sensor Support

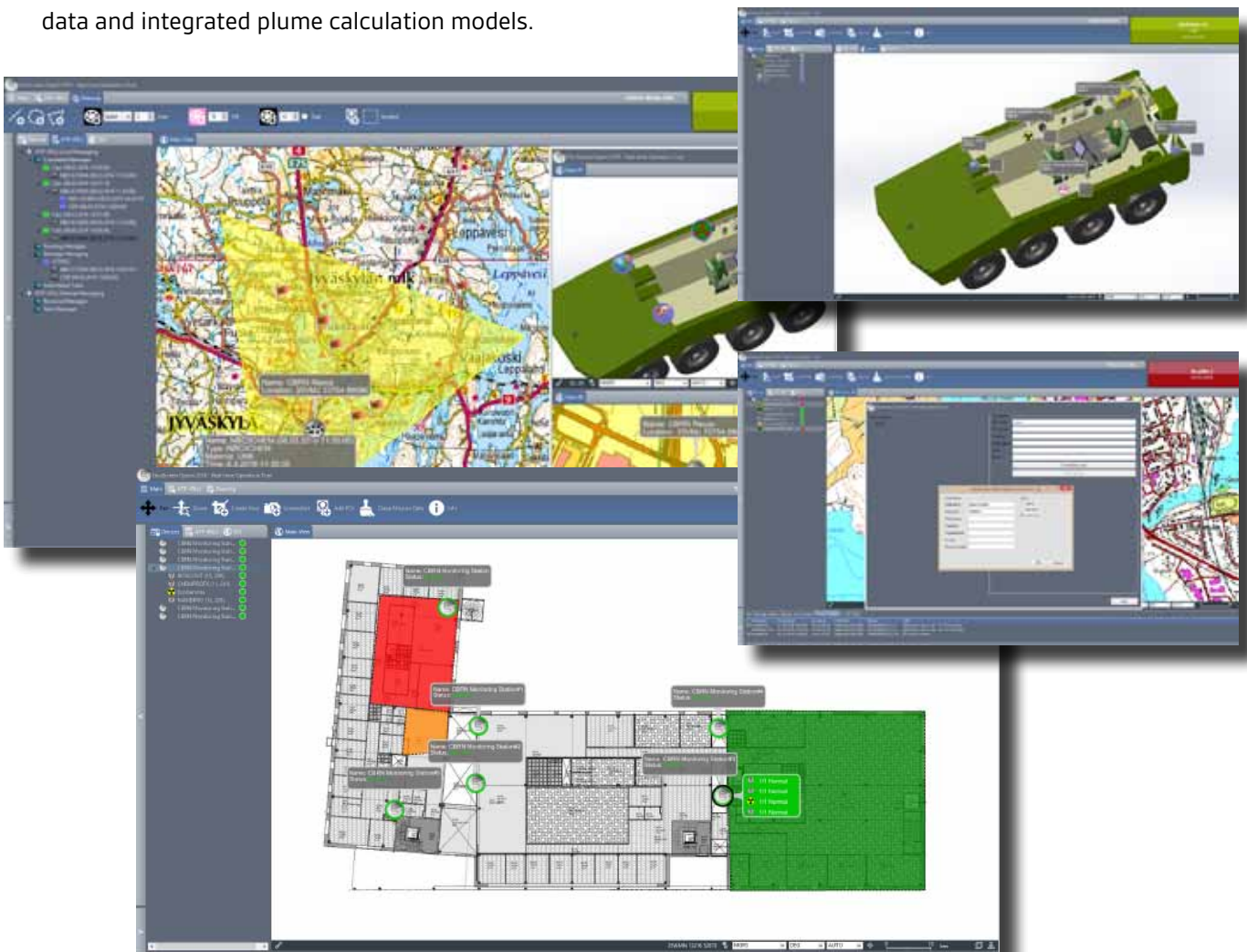
EnviScreen Operix 2016 is compatible for wide range of CBRN sensors and analyzers. This enables best possible detection capability for different environments and applications. Though the already wide range of sensors support the system design provides possibility to cost-effective and rapid new sensor integrations.

Integrations

For the auxiliary systems and sensors there are protocol- and application level integration solutions. Critical data can be sent or received from other systems such as building-, automation- and C4 systems. This expands system capabilities beyond the basic CBRN monitoring network.

Network Security

There is always possibility that someone tries listen or interfere the system. Utilizing most proven and robust encryption methods EnviScreen Operix 2016 makes sure that the situation on the field is transferred fast and secured to the control centers.



Customized Solutions Using Options

- EnviScreen Simulation Tool for System training.
- EnviScreen Web Reporting Service for CBRN alarm report generation and printing.
- EnviScreen Integration SDK for 3rd party API software integrations.
- EnviScreen Modbus Gateway for Process- and Building Automation System integrations.
- GeoServer web map service for geographic map data
- Plume module integration to model chemical, biological, radiological and nuclear dispersion forecasts.
- EnviScreen ATP-45 Service for NATO ATP-45 compatible reports and hazard area plotting for (for essential parts).
- EnviScreen Operix Client 2016 for real-time situation overview and sensor management from multiple locations.



Environics Oy
 P.O. Box 349
 FI-50101 Mikkeli
 FINLAND
 tel. +358 201 430 430
 fax. +358 201 430 440
 sales@environics.fi
 www.environics.fi



Subscribe to our Newsletter

